



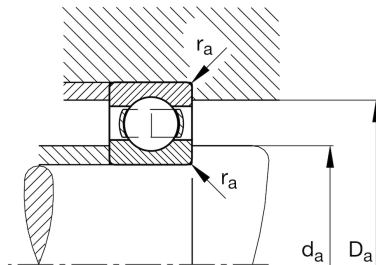
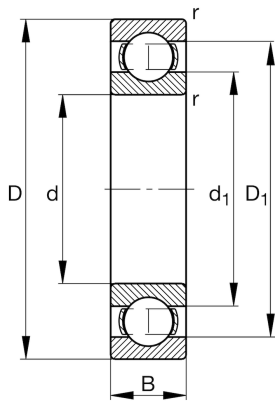
FAG

6003

Deep groove ball bearing

Schaeffler ID:
0167170150000Deep groove ball bearing 60, single row,
steel sheet metal cage

Technical information

**Main Dimensions & Performance Data**

d	17 mm	Bore diameter
D	35 mm	Outside diameter
B	10 mm	Width
C_r	6,400 N	Basic dynamic load rating, radial
C_{0r}	3,250 N	Basic static load rating, radial
C_{ur}	162 N	Fatigue load limit, radial
n_G	31,000 1/min	Limiting speed
n_{gr}	20,300 1/min	Reference speed
	37 g	Weight

Dimensions

r_{min}	0.3 mm	Minimum chamfer dimension
D_1	29.5 mm	Shoulder diameter outer ring
d_1	22.7 mm	Shoulder diameter inner ring

Mounting dimensions

$d_{a min}$	19 mm	Minimum diameter shaft shoulder
$D_{a max}$	33 mm	Maximum diameter of housing shoulder
$r_{a max}$	0.3 mm	Maximum fillet radius

Calculation factors

f_0	14.3	Calculation factor
-------	------	--------------------

Temperature range

T_{min}	-30 °C	Operating temperature min.
T_{max}	120 °C	Operating temperature max.